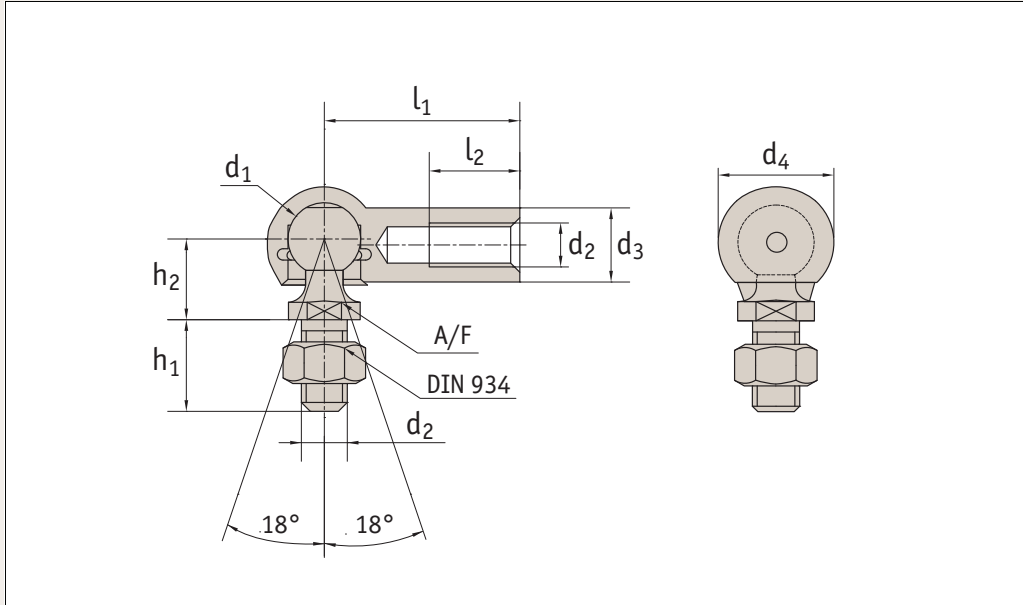




## R3460



### Material

Steel, silver zinc plated.  
 Ball stud: minimum tensile strength  
 $R_m=600N/mm^2$ .  
 Housing: minimum tensile strength  
 $R_m=500N/mm^2$ .

### Technical Notes

To DIN 71802 form CS.  
 Supplied with hexagon nut.  
 Safety ring aids the retention of the  
 ball stud in the housing.  
 \*M14x1,5 is a fine pitch thread

### Tips

For yellow zinc plated, see R3463.  
 For sealing cap version, see R3470.  
 Standard thread is right hand, (for left  
 hand thread see R3461).

Order No.	Thread (hand)	d <sub>1</sub>	d <sub>2</sub>	l <sub>1</sub> ±0.3	d <sub>3</sub>	d <sub>4</sub>	l <sub>2</sub> min.	Δ±g
R3460.R005	Right	8	M 5	22	8	12,8	10,2	15,2
R3460.R006	Right	10	M 6	25	10	14,8	11,5	25,2
R3460.R008	Right	13	M 8	30	13	19,3	14,0	53,1
R3460.R010	Right	16	M10	35	16	24,0	15,5	103,8
R3460.R012	Right	16	M12	35	16	24,0	15,5	103,8
R3460.R014	Right	19	M14x1,5*	45	19	30,0	21,5	220,9
R3460.R015	Right	19	M14	45	19	30,0	21,5	220,9
R3460.R016	Right	19	M16	45	19	30,0	21,5	220,9

Order No.	h <sub>1</sub> ±0.3	h <sub>2</sub> ±0.3	A/F h14	Min. extraction force Kg	Max. static load Kg	Max. dynamic load Kg	Max. force required for movement Kg
R3460.R005	10,2	9	7	3	50	20	3
R3460.R006	12,5	11	8	4	100	40	4
R3460.R008	16,5	13	11	6	200	80	6
R3460.R010	20,0	16	13	8	400	160	8
R3460.R012	20,0	16	13	8	400	160	8
R3460.R014	28,0	19	16	10	800	320	10
R3460.R015	28,0	19	16	10	800	320	10
R3460.R016	28,0	19	16	10	800	320	10