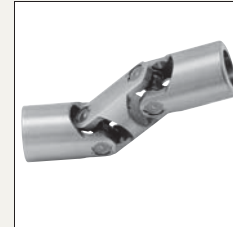
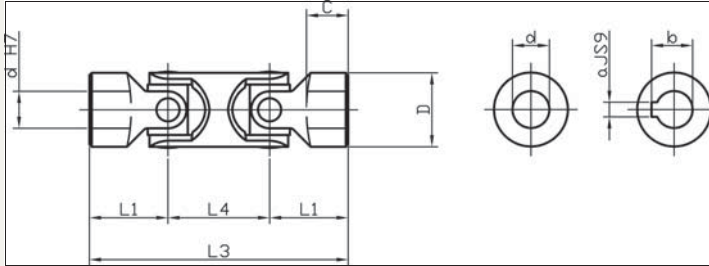


Universal Joint double

Universal joints



R3684

DIN 808
y

Material

Free cutting steel 9 SMn Pb 28 k, no. 10718.
Zinc plated (silver).
Bearing type: Journal bearing.

Technical Notes DIN 808/7551

Maximum bending angle 45° per

joint.

Max. drive speed of joints with journal bearings 1000 rpm.

Tips

Double universal joints are used where large bending angles are required or where two shafts offset in relation to

each other.

Product Variations available on request: needle bearings, square bores and hex bores.

For stainless steel see R3696

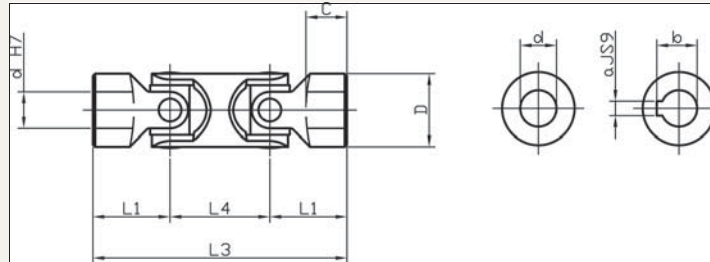
Order No.	Bore	d H ₇	D	L ₃	L ₁	L ₄	C	b	a JS9	$\frac{\Delta^+ \Delta^-}{g}$
R3684.010	Round Bore	10	16	74	26	22	15	8	-	80
R3684.012	Round Bore	12	22	88	31	26	18	20	-	200
R3684.016	Round Bore	16	25	104	37	30	21	30	-	300
R3684.020	Round Bore	20	32	124	43	38	24	60	-	500
R3684.025	Round Bore	25	42	156	54	48	31	160	-	1200
R3684.030	Round Bore	30	50	188	66	56	38	290	-	1700
R3684.040	Round Bore	40	70	238	83	72	47	450	-	4300
R3684.210	with keyway	10	16	74	26	22	15	8	11,4	80
R3684.212	with keyway	12	22	88	31	26	18	20	13,8	200
R3684.216	with keyway	16	25	104	37	30	21	30	18,3	300
R3684.220	with keyway	20	32	124	43	38	24	60	22,8	500
R3684.225	with keyway	25	42	156	54	48	31	160	28,3	1200
R3684.230	with keyway	30	50	188	66	56	38	290	35,3	1700
R3684.240	with keyway	40	70	238	83	72	47	450	43,3	4300

Our linkages, your solution 01483 26 6784

SPRINGFIX®
LINKAGES

Universal joints

Universal Joint double



R3685

DIN 808
y

Material

Free cutting steel 9 SMn Pb 28 k, no. 10718.
Zinc plated (silver).
Bearing type: Journal bearing.

Technical Notes
DIN 808

Maximum bending angle 45° per

joint.

Max. drive speed of joints with journal bearings 1000 rpm.

Tips

Double universal joints are used where large bending angles are required or where two shafts offset in relation to

each other.

Product Variations available on request: needle bearings, square bores and hex bores.

For stainless steel see R3696

Order No.	Bore	d H7	D	L3	L1	L4	C	b	a JS9	$\Delta \pm a$ g
R3685.006	Round Bore	6	16	56	17	22	8	-	-	80
R3685.008	Round Bore	8	16	62	20	22	11	-	-	80
R3685.010	Round Bore	10	22	74	24	26	12	-	-	150
R3685.012	Round Bore	12	25	86	28	30	13	-	-	250
R3685.014	Round Bore	14	28	96	30	36	14	-	-	400
R3685.016	Round Bore	16	32	104	34	36	16	-	-	450
R3685.018	Round Bore	18	36	114	37	40	17	-	-	700
R3685.020	Round Bore	20	42	128	41	46	18	-	-	1000
R3685.022	Round Bore	22	45	145	47,5	50	22	-	-	1550
R3685.025	Round Bore	25	50	163	54	55	26	-	-	2000
R3685.030	Round Bore	30	58	190	61	68	29	-	-	2900
R3685.032	Round Bore	32	58	198	65	68	33	-	-	3000
R3685.035	Round Bore	35	70	212	70	72	35	-	-	4750
R3685.040	Round Bore	40	80	245	80	85	39	-	-	7200
R3685.050	Round Bore	50	95	290	95	100	46	-	-	12,000
R3685.206	With Keyway	6	16	56	17	22	8	7	2	80
R3685.208	With Keyway	8	16	62	20	22	11	9	2	80
R3685.210	With Keyway	10	22	74	24	26	12	11,4	3	150
R3685.212	With Keyway	12	25	86	28	30	13	13,8	4	250
R3685.214	With Keyway	14	28	96	30	36	14	16,3	5	400
R3685.216	With Keyway	16	32	104	34	36	16	18,3	5	450
R3685.218	With Keyway	18	36	114	37	40	17	20,8	6	700

Continued on next page

Universal Joint double



Universal
joints

Continued from previous page

Order No.	Bore	d H ₇	D	L3	L1	L4	C	b	a JS9	$\frac{L_3}{g}$
R3685.220	With Keyway	20	42	128	41	46	18	22,8	6	1000
R3685.222	With Keyway	22	45	145	47,5	50	22	24,8	6	1550
R3685.225	With Keyway	25	50	163	54	55	26	28,3	8	2000
R3685.230	With Keyway	30	58	190	61	68	29	33,3	8	2900
R3685.232	With Keyway	32	58	198	65	68	33	35,3	10	3000
R3685.235	With Keyway	35	70	212	70	72	35	38,3	10	4750
R3685.240	With Keyway	40	80	245	80	85	39	43,3	12	7200
R3685.250	With Keyway	50	95	290	95	100	46	53,8	14	12,000

Our linkages, your solution **01483 26 6784**

SPRINGFIX®
LINKAGES

7