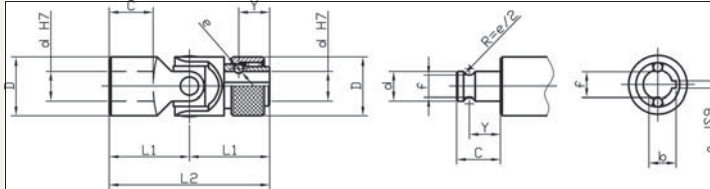


Universal Joint with quick change coupling

Universal
joints



R3692

y

Material

Free cutting steel 9 SMn Pb 28 k, no. 10718, greased.
Zinc plated (silver).
Bearing type: journal bearing.

Technical Notes DIN 808

Maximum bending angle 45° per joint.

Max. drive speed of joints with journal bearings 1000 rpm.

Tips

Rapid change coupling ideal where time is critical. Arresting of shaft accomplished with two ball bearings

engaging the shaft via a round bore key.

Product variations available on request: needle bearings and hex shaped bores.
(Keyway and hex shaped bores on quick change end only unless requested otherwise.)

| Order No | d H7 | D | L2 | L1 | C | Y | e | f | a JS9 | b |
|-----------|---------|----|-----|----|----|------|------|------|----------|------|
| R3692.008 | 8 | 16 | 52 | 26 | 14 | 9,5 | 3,5 | 6,3 | 2 | 9 |
| R3692.010 | 10 | 22 | 62 | 31 | 17 | 11,5 | 4 | 8,7 | 3 | 11 |
| R3692.012 | 12 | 25 | 74 | 37 | 21 | 13,5 | 4 | 11 | 4 | 13,3 |
| R3692.014 | 14 | 25 | 74 | 37 | 21 | 13,5 | 4 | 13 | 5 | 15,3 |
| R3692.016 | 16 | 32 | 86 | 43 | 24 | 14 | 6,35 | 14,8 | 5 | 17,3 |
| R3692.018 | 18 | 36 | 96 | 48 | 28 | 19 | 8 | 16 | 6 | 19,8 |
| R3692.020 | 20 | 42 | 108 | 54 | 31 | 19 | 8 | 18 | 6 | 22,8 |
| R3692.022 | 22 | 45 | 120 | 60 | 34 | 20,5 | 10 | 20 | 6 | 24,8 |
| R3692.025 | 25 | 50 | 132 | 66 | 38 | 20,5 | 10 | 23 | 8 | 28,3 |
| R3692.030 | 30 | 58 | 166 | 83 | 49 | 25 | 10 | 28 | 8 | 33,3 |

Our linkages, your solution 01483 26 6784

SPRINGFIX®
LINKAGES

3