

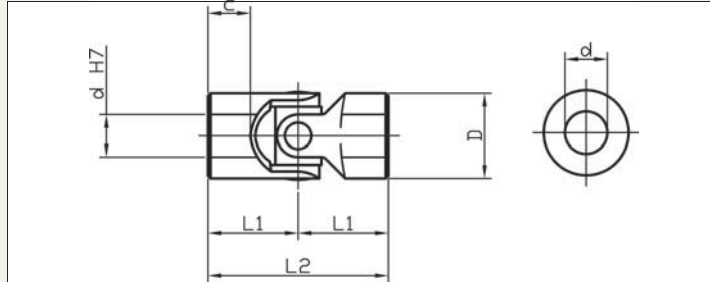
Universal joints

Universal Joint single - stainless steel



R3694

808
y



Material
Stainless Steel AISI 304

Technical Notes
Maximum Bending angle 45° per joint.

DIN 808

Tips
Product variations available on request: Keyways, Square bores and hex shaped bores.

Order No.	d H7	D	L2	L1	C	$\frac{\Delta}{g}$
R3694.006	6	16	34	17	8	50
R3694.008	8	16	40	20	11	50
R3694.010	10	22	48	24	12	100
R3694.012	12	25	56	28	13	160
R3694.016	16	32	68	34	16	300
R3694.020	20	42	82	41	18	600
R3694.025	25	50	108	54	26	1200
R3694.030	30	58	122	61	29	1850