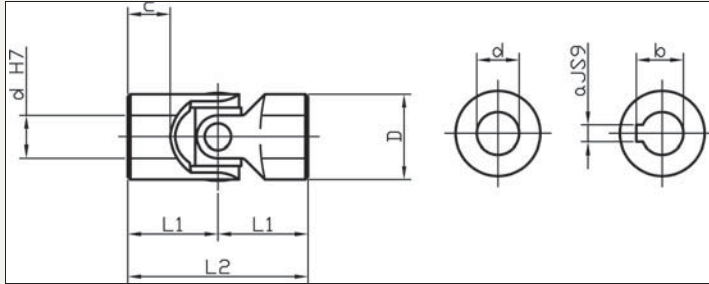


# Universal joint single

# Universal joints



**R3688**

**DIN 808**  
**y**

**Material**

Free cutting steel 9 SMn Pb 28 k, no. 10718.  
Zinc plated (silver).  
Bearing type: journal bearing.

Maximum bending angle 45° per joint.

**Max. drive speed of joints with journal bearings 1000 rpm.**

Product Variations available on request: needle bearings, square bores and hex bores.

**Tips**

Single universal joints are used where shafts off-set toward each other.

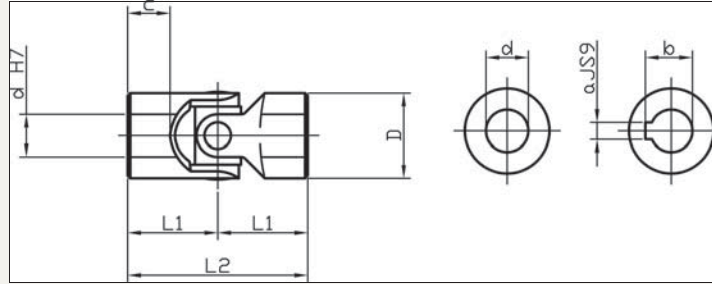
For **Stainless Steel** see R3694

**Technical Notes**  
**DIN 808/7551**

Order No.	Bore	d H7	D	L2	L1	C	a	b	$\frac{a+b}{2}$ g
R3688.010	Round Bore	10	16	52	26	15	-	-	50
R3688.012	Round Bore	12	22	62	31	18	-	-	120
R3688.016	Round Bore	16	25	74	37	21	-	-	200
R3688.020	Round Bore	20	32	86	43	24	-	-	350
R3688.025	Round Bore	25	42	108	54	31	-	-	800
R3688.032	Round Bore	32	50	132	66	38	-	-	1200
R3688.040	Round Bore	40	70	166	83	47	-	-	2900
R3688.210	With keyway	10	16	52	26	15	3	11,4	50
R3688.212	With keyway	12	22	62	31	18	4	13,8	120
R3688.216	With keyway	16	25	74	37	21	5	18,3	200
R3688.220	With keyway	20	32	86	43	24	6	22,8	350
R3688.225	With keyway	25	42	108	54	31	8	28,3	800
R3688.232	With keyway	32	50	132	66	38	8	33,3	1200
R3688.240	With keyway	40	70	166	83	47	12	43,3	2900

# Universal joints

## Universal joint single



### R3689

DIN 808  
y

#### Material

Free cutting steel 9 SMn Pb 28 k, no. 10718.  
Zinc plated (silver).  
Bearing type: journal bearing.

Maximum bending angle 45° per joint.

**Max. drive speed of joints with journal bearings 1000 rpm.**

Product Variations available on request: needle bearings, square bores and hex bores.

#### Tips

Single universal joints are used where shafts off-set toward each other.

For **Stainless steel** see R3694

**Technical Notes**  
DIN 808

Order No.	Bore	d H <sub>7</sub>	D	L2	L1	$\frac{\Delta d}{d}$ g
R3689.006	Round Bore	6	16	34	17	50
R3689.008	Round Bore	8	16	40	20	50
R3689.010	Round Bore	10	22	48	24	100
R3689.012	Round Bore	12	25	56	28	160
R3689.014	Round Bore	14	28	60	30	200
R3689.016	Round Bore	16	32	68	34	300
R3689.018	Round Bore	18	36	74	37	450
R3689.020	Round Bore	20	42	82	41	600
R3689.022	Round Bore	22	45	95	47,5	950
R3689.025	Round Bore	25	50	108	54	1200
R3689.030	Round Bore	30	58	122	61	1850
R3689.032	Round Bore	32	58	130	65	2000
R3689.035	Round Bore	35	70	140	70	3150
R3689.040	Round Bore	40	80	160	80	4600
R3689.050	Round Bore	50	95	190	95	7600
R3689.206	With Keyway	6	16	34	17	50
R3689.208	With Keyway	8	16	40	20	50
R3689.210	With Keyway	10	22	48	24	100
R3689.212	With Keyway	12	25	56	28	160
R3689.214	With Keyway	14	28	60	30	200
R3689.216	With Keyway	16	32	68	34	300
R3689.218	With Keyway	18	36	74	37	450
R3689.220	With Keyway	20	42	82	41	600
R3689.222	With Keyway	22	45	95	47,5	950
R3689.225	With Keyway	25	50	108	54	1200
R3689.230	With Keyway	30	58	122	61	1850
R3689.232	With Keyway	32	58	130	65	2000
R3689.235	With Keyway	35	70	140	70	3150
R3689.240	With Keyway	40	80	160	80	4600
R3689.250	With Keyway	50	95	190	95	7600