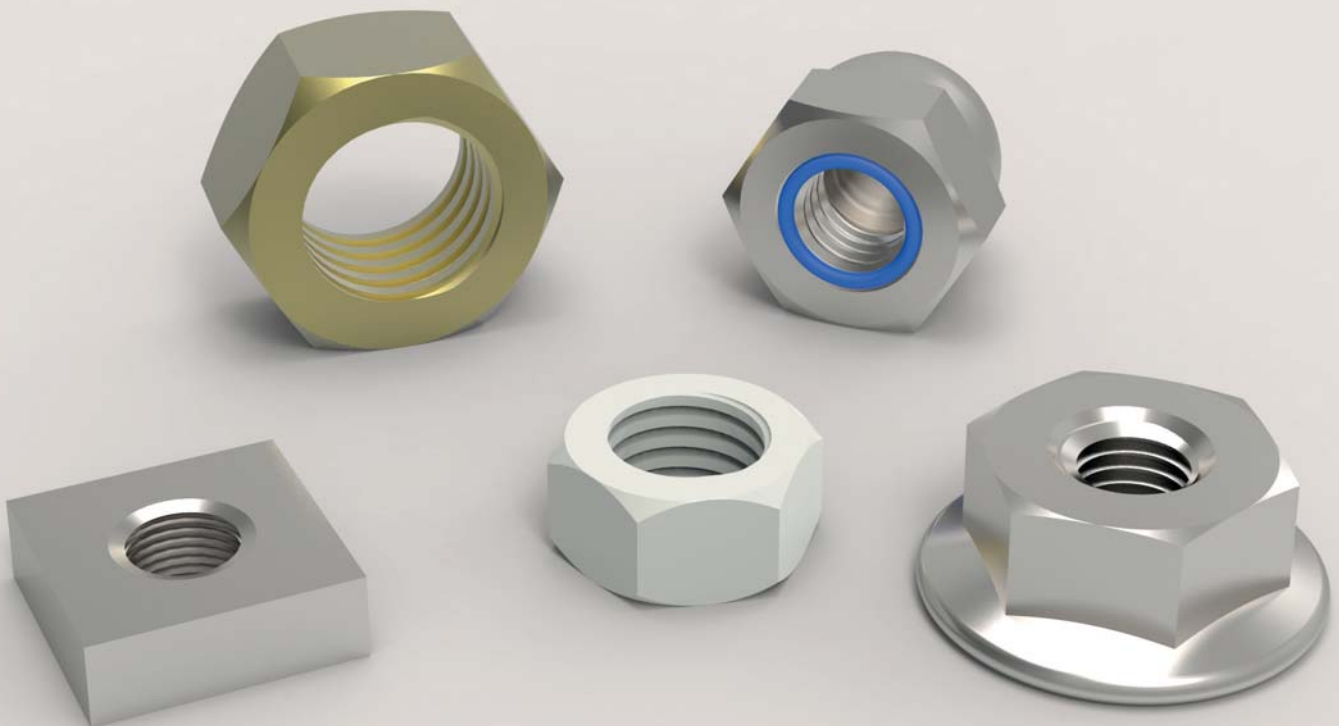
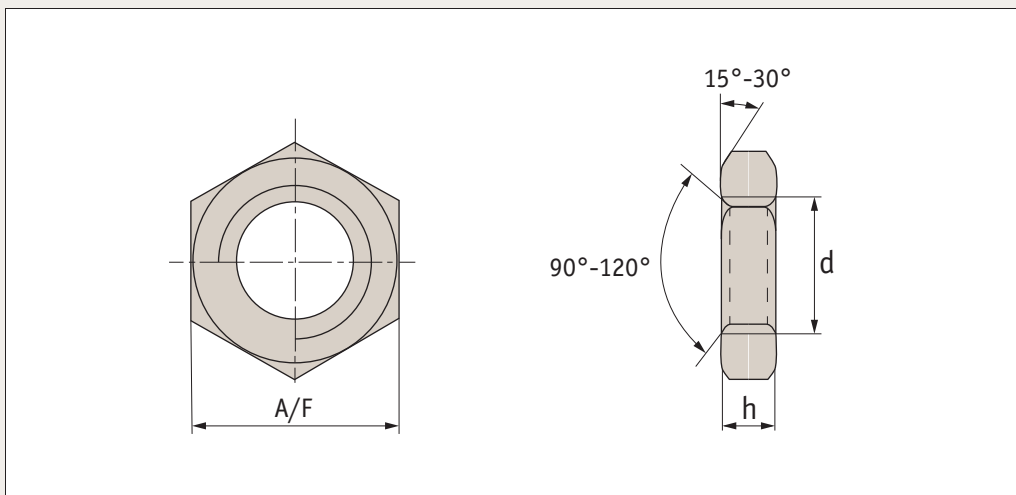




## Nuts





## P0306

### Material

Stainless steel (A2 & A4, class 70), steel class 4 (zinc-plated & self-colour), brass and nylon.

### Technical Notes

To DIN 439. Fine pitch threads.  
For coarse thread lock nuts see P0305.

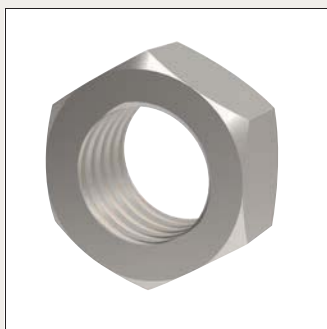
Order No.	d	h	A/F	Material
<b>P0306.080-100-A2</b>	M 8x1,0	3,7	13	A2 s/s
<b>P0306.100-100-A2</b>	M10x1,0	4,7	17	A2 s/s
<b>P0306.100-125-A2</b>	M10x1,25	4,7	17	A2 s/s
<b>P0306.120-125-A2</b>	M12x1,25	5,7	19	A2 s/s
<b>P0306.120-150-A2</b>	M12x1,5	5,7	19	A2 s/s
<b>P0306.140-150-A2</b>	M14x1,5	6,42	22	A2 s/s
<b>P0306.160-150-A2</b>	M16x1,5	7,42	24	A2 s/s
<b>P0306.180-150-A2</b>	M18x1,5	8,42	27	A2 s/s
<b>P0306.200-150-A2</b>	M20x1,5	9,1	30	A2 s/s
<b>P0306.220-150-A2</b>	M22x1,5	9,9	34	A2 s/s
<b>P0306.240-150-A2</b>	M24x1,5	10,9	36	A2 s/s
<b>P0306.240-200-A2</b>	M24x2,0	10,9	36	A2 s/s
<b>P0306.270-150-A2</b>	M27x1,5	12,4	41	A2 s/s
<b>P0306.270-200-A2</b>	M27x2,0	12,4	41	A2 s/s
<b>P0306.300-150-A2</b>	M30x1,5	13,9	46	A2 s/s
<b>P0306.300-200-A2</b>	M30x2,0	13,9	46	A2 s/s
<b>P0306.330-200-A2</b>	M33x2,0	15,4	49	A2 s/s
<b>P0306.360-150-A2</b>	M36x1,5	16,9	55	A2 s/s
<b>P0306.080-100-A4</b>	M 8x1,0	3,7	13	A4 s/s
<b>P0306.100-100-A4</b>	M10x1,0	4,7	17	A4 s/s
<b>P0306.100-125-A4</b>	M10x1,25	4,7	17	A4 s/s
<b>P0306.120-125-A4</b>	M12x1,25	5,7	19	A4 s/s
<b>P0306.120-150-A4</b>	M12x1,5	5,7	19	A4 s/s
<b>P0306.140-150-A4</b>	M14x1,5	6,42	22	A4 s/s
<b>P0306.160-150-A4</b>	M16x1,5	7,42	24	A4 s/s
<b>P0306.180-150-A4</b>	M18x1,5	8,42	27	A4 s/s
<b>P0306.200-150-A4</b>	M20x1,5	9,1	30	A4 s/s
<b>P0306.220-150-A4</b>	M22x1,5	9,9	34	A4 s/s
<b>P0306.240-150-A4</b>	M24x1,5	10,9	36	A4 s/s
<b>P0306.240-200-A4</b>	M24x2,0	10,9	36	A4 s/s
<b>P0306.270-150-A4</b>	M27x1,5	12,4	41	A4 s/s
<b>P0306.270-200-A4</b>	M27x2,0	12,4	41	A4 s/s
<b>P0306.300-150-A4</b>	M30x1,5	13,9	46	A4 s/s
<b>P0306.300-200-A4</b>	M30x2,0	13,9	46	A4 s/s

Order No.	d	h	A/F	Material
<b>P0306.330-200-A4</b>	M33x2,0	15,4	49	A4 s/s
<b>P0306.360-150-A4</b>	M36x1,5	16,9	55	A4 s/s
<b>P0306.080-100-ZP</b>	M 8x1,0	3,7	13	Steel ZP
<b>P0306.100-100-ZP</b>	M10x1,0	4,7	17	Steel ZP
<b>P0306.100-125-ZP</b>	M10x1,25	4,7	17	Steel ZP
<b>P0306.120-125-ZP</b>	M12x1,25	5,7	19	Steel ZP
<b>P0306.120-150-ZP</b>	M12x1,5	5,7	19	Steel ZP
<b>P0306.140-150-ZP</b>	M14x1,5	6,42	22	Steel ZP
<b>P0306.160-150-ZP</b>	M16x1,5	7,42	24	Steel ZP
<b>P0306.180-150-ZP</b>	M18x1,5	8,42	27	Steel ZP
<b>P0306.200-150-ZP</b>	M20x1,5	9,1	30	Steel ZP
<b>P0306.200-200-ZP</b>	M20x2,0	9,1	30	Steel ZP
<b>P0306.220-150-ZP</b>	M22x1,5	9,9	34	Steel ZP
<b>P0306.240-150-ZP</b>	M24x1,5	10,9	36	Steel ZP
<b>P0306.240-200-ZP</b>	M24x2,0	10,9	36	Steel ZP
<b>P0306.270-150-ZP</b>	M27x1,5	12,4	41	Steel ZP
<b>P0306.270-200-ZP</b>	M27x2,0	12,4	41	Steel ZP
<b>P0306.300-150-ZP</b>	M30x1,5	13,9	46	Steel ZP
<b>P0306.300-200-ZP</b>	M30x2,0	13,9	46	Steel ZP
<b>P0306.330-200-ZP</b>	M33x2,0	15,4	49	Steel ZP
<b>P0306.360-150-ZP</b>	M36x1,5	16,9	55	Steel ZP
<b>P0306.360-200-ZP</b>	M36x2,0	16,9	55	Steel ZP
<b>P0306.360-300-ZP</b>	M36x3,0	16,9	55	Steel ZP
<b>P0306.080-100-SC</b>	M 8x1,0	3,7	13	Steel SC
<b>P0306.100-100-SC</b>	M10x1,0	4,7	17	Steel SC
<b>P0306.100-125-SC</b>	M10x1,25	4,7	17	Steel SC
<b>P0306.120-125-SC</b>	M12x1,25	5,7	19	Steel SC
<b>P0306.120-150-SC</b>	M12x1,5	5,7	19	Steel SC
<b>P0306.140-150-SC</b>	M14x1,5	6,42	22	Steel SC
<b>P0306.160-150-SC</b>	M16x1,5	7,42	24	Steel SC
<b>P0306.180-150-SC</b>	M18x1,5	8,42	27	Steel SC
<b>P0306.200-150-SC</b>	M20x1,5	9,1	30	Steel SC
<b>P0306.220-150-SC</b>	M22x1,5	9,9	34	Steel SC

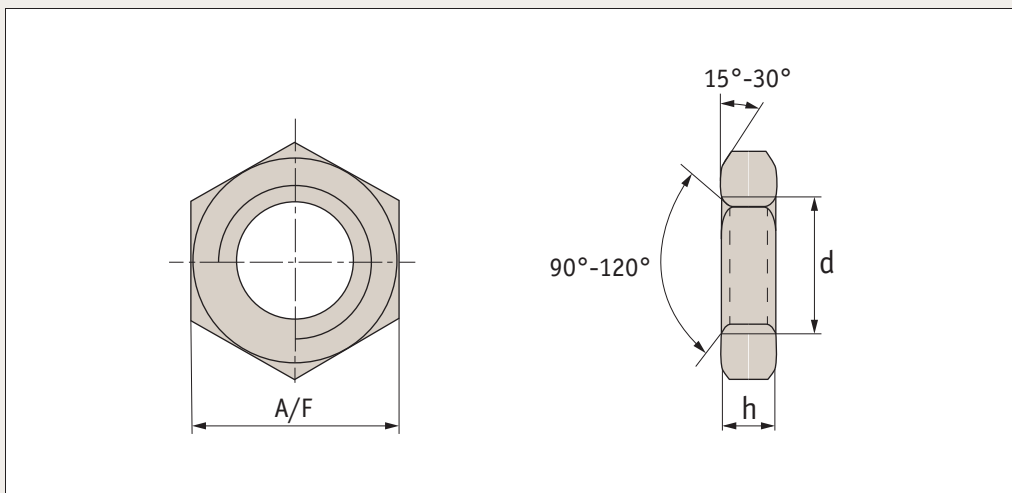


Order No.	d	h	A/F	Material
<b>P0306.240-150-SC</b>	M24x1,5	10,9	36	Steel SC
<b>P0306.240-200-SC</b>	M24x2,0	10,9	36	Steel SC
<b>P0306.270-150-SC</b>	M27x1,5	12,4	41	Steel SC
<b>P0306.270-200-SC</b>	M27x2,0	12,4	41	Steel SC
<b>P0306.300-150-SC</b>	M30x1,5	13,9	46	Steel SC
<b>P0306.300-200-SC</b>	M30x2,0	13,9	46	Steel SC
<b>P0306.330-200-SC</b>	M33x2,0	15,4	49	Steel SC
<b>P0306.360-150-SC</b>	M36x1,5	16,9	55	Steel SC
<b>P0306.360-300-SC</b>	M36x1,5	16,9	55	Steel SC
<b>P0306.390-150-SC</b>	M39x1,5	19,5	60	Steel SC
<b>P0306.420-150-SC</b>	M42x1,5	21	65	Steel SC
<b>P0306.450-300-SC</b>	M45x3,0	22,5	70	Steel SC
<b>P0306.480-150-SC</b>	M48x1,5	24	75	Steel SC
<b>P0306.520-150-SC</b>	M52x1,5	26	80	Steel SC

Order No.	d	h	A/F	Material
<b>P0306.560-200-SC</b>	M56x2,0	28	85	Steel SC
<b>P0306.080-100-BR</b>	M 8x1,0	3,7	13	Brass
<b>P0306.100-100-BR</b>	M10x1,0	4,7	17	Brass
<b>P0306.120-150-BR</b>	M12x1,5	5,7	19	Brass
<b>P0306.140-150-BR</b>	M14x1,5	6,42	22	Brass
<b>P0306.160-150-BR</b>	M16x1,5	7,42	24	Brass
<b>P0306.180-150-BR</b>	M18x1,5	8,42	27	Brass
<b>P0306.200-150-BR</b>	M20x1,5	9,1	30	Brass
<b>P0306.220-150-BR</b>	M22x1,5	9,9	34	Brass
<b>P0306.240-150-BR</b>	M24x1,5	10,9	36	Brass
<b>P0306.270-150-BR</b>	M27x1,5	12,4	41	Brass
<b>P0306.300-150-BR</b>	M30x1,5	13,9	46	Brass



## P0305



### Material

Stainless steel (A2 & A4, class 70), steel class 4 (zinc-plated & self-colour), brass and nylon.

### Technical Notes

To DIN 439. Standard metric coarse pitch threads. For fine thread lock nuts see P0306.

Order No.	d	h	A/F	Material
P0305.016-A2	M1,6	0,75	3,2	A2 s/s
P0305.017-A2	M1,7	0,75	3,5	A2 s/s
P0305.020-A2	M 2	0,95	4	A2 s/s
P0305.023-A2	M2,3	0,95	4,5	A2 s/s
P0305.025-A2	M2,5	1,35	5	A2 s/s
P0305.026-A2	M2,6	1,35	5	A2 s/s
P0305.030-A2	M 3	1,55	5,5	A2 s/s
P0305.040-A2	M 4	1,95	7	A2 s/s
P0305.050-A2	M 5	2,45	8	A2 s/s
P0305.060-A2	M 6	2,9	10	A2 s/s
P0305.080-A2	M 8	3,7	13	A2 s/s
P0305.100-A2	M10	4,7	17	A2 s/s
P0305.120-A2	M12	5,7	19	A2 s/s
P0305.140-A2	M14	6,42	22	A2 s/s
P0305.160-A2	M16	7,42	24	A2 s/s
P0305.180-A2	M18	8,42	27	A2 s/s
P0305.200-A2	M20	9,1	30	A2 s/s
P0305.220-A2	M22	9,9	34	A2 s/s
P0305.240-A2	M24	10,9	36	A2 s/s
P0305.270-A2	M27	12,4	41	A2 s/s
P0305.300-A2	M30	13,9	46	A2 s/s
P0305.330-A2	M33	15,4	50	A2 s/s
P0305.360-A2	M36	16,9	55	A2 s/s
P0305.420-A2	M42	19,7	65	A2 s/s
P0305.480-A2	M48	22,7	75	A2 s/s
P0305.016-A4	M1,6	0,75	3,2	A4 s/s
P0305.017-A4	M1,7	0,75	3,5	A4 s/s
P0305.020-A4	M 2	0,95	4	A4 s/s
P0305.023-A4	M2,3	0,95	4,5	A4 s/s
P0305.025-A4	M2,5	1,35	5	A4 s/s
P0305.026-A4	M2,6	1,35	5	A4 s/s
P0305.030-A4	M 3	1,55	5,5	A4 s/s
P0305.040-A4	M 4	1,95	7	A4 s/s
P0305.050-A4	M 5	2,45	8	A4 s/s

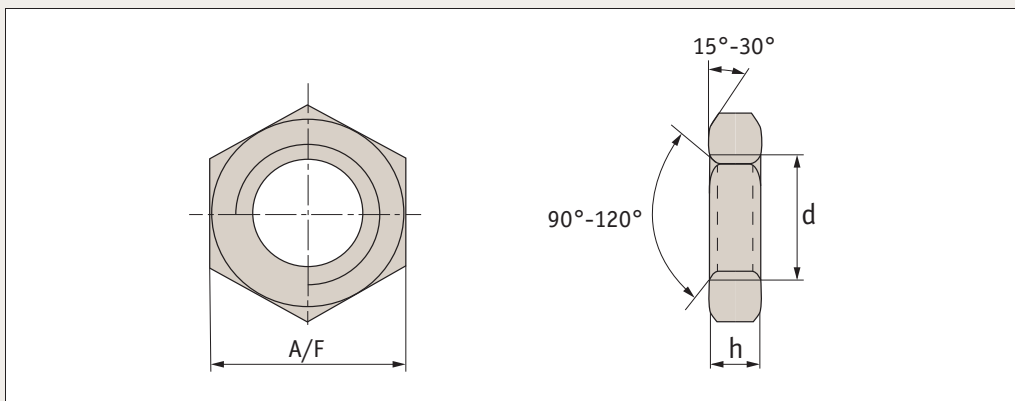
Order No.	d	h	A/F	Material
P0305.060-A4	M 6	2,9	10	A4 s/s
P0305.080-A4	M 8	3,7	13	A4 s/s
P0305.100-A4	M10	4,7	17	A4 s/s
P0305.120-A4	M12	5,7	19	A4 s/s
P0305.140-A4	M14	6,42	22	A4 s/s
P0305.160-A4	M16	7,42	24	A4 s/s
P0305.180-A4	M18	8,42	27	A4 s/s
P0305.200-A4	M20	9,1	30	A4 s/s
P0305.220-A4	M22	9,9	34	A4 s/s
P0305.240-A4	M24	10,9	36	A4 s/s
P0305.270-A4	M27	12,4	41	A4 s/s
P0305.300-A4	M30	13,9	46	A4 s/s
P0305.330-A4	M33	15,4	50	A4 s/s
P0305.360-A4	M36	16,9	55	A4 s/s
P0305.420-A4	M42	19,7	65	A4 s/s
P0305.480-A4	M48	22,7	75	A4 s/s
P0305.020-ZP	M 2	0,95	4	Steel ZP
P0305.025-ZP	M2,5	1,35	5	Steel ZP
P0305.030-ZP	M 3	1,55	5,5	Steel ZP
P0305.040-ZP	M 4	1,95	7	Steel ZP
P0305.050-ZP	M 5	2,45	8	Steel ZP
P0305.060-ZP	M 6	2,9	10	Steel ZP
P0305.080-ZP	M 8	3,7	13	Steel ZP
P0305.100-ZP	M10	4,7	17	Steel ZP
P0305.120-ZP	M12	5,7	19	Steel ZP
P0305.140-ZP	M14	6,42	22	Steel ZP
P0305.160-ZP	M16	7,42	24	Steel ZP
P0305.180-ZP	M18	8,42	27	Steel ZP
P0305.200-ZP	M20	9,1	30	Steel ZP
P0305.220-ZP	M22	9,9	34	Steel ZP
P0305.240-ZP	M24	10,9	36	Steel ZP
P0305.270-ZP	M27	12,4	41	Steel ZP
P0305.300-ZP	M30	13,9	46	Steel ZP
P0305.330-ZP	M33	15,4	50	Steel ZP

Order No.	d	h	A/F	Material
<b>P0305.360-ZP</b>	M36	16,9	55	Steel ZP
<b>P0305.420-ZP</b>	M42	19,7	65	Steel ZP
<b>P0305.020-SC</b>	M 2	0,95	4	Steel SC
<b>P0305.025-SC</b>	M2,6	1,35	5	Steel SC
<b>P0305.030-SC</b>	M 3	1,55	5,5	Steel SC
<b>P0305.040-SC</b>	M 4	1,95	7	Steel SC
<b>P0305.050-SC</b>	M 5	2,45	8	Steel SC
<b>P0305.060-SC</b>	M 6	2,9	10	Steel SC
<b>P0305.080-SC</b>	M 8	3,7	13	Steel SC
<b>P0305.100-SC</b>	M10	4,7	17	Steel SC
<b>P0305.120-SC</b>	M12	5,7	19	Steel SC
<b>P0305.140-SC</b>	M14	6,42	22	Steel SC
<b>P0305.160-SC</b>	M16	7,42	24	Steel SC
<b>P0305.180-SC</b>	M18	8,42	27	Steel SC
<b>P0305.200-SC</b>	M20	9,1	30	Steel SC
<b>P0305.220-SC</b>	M22	9,9	34	Steel SC
<b>P0305.240-SC</b>	M24	10,9	36	Steel SC
<b>P0305.270-SC</b>	M27	12,4	41	Steel SC
<b>P0305.300-SC</b>	M30	13,9	46	Steel SC
<b>P0305.330-SC</b>	M33	15,4	50	Steel SC
<b>P0305.360-SC</b>	M36	16,9	55	Steel SC
<b>P0305.390-SC</b>	M39	19,5	60	Steel SC

Order No.	d	h	A/F	Material
<b>P0305.420-SC</b>	M42	21	65	Steel SC
<b>P0305.450-SC</b>	M45	22,5	70	Steel SC
<b>P0305.480-SC</b>	M48	24	75	Steel SC
<b>P0305.520-SC</b>	M52	26	80	Steel SC
<b>P0305.560-SC</b>	M56	28	85	Steel SC
<b>P0305.600-SC</b>	M60	30	90	Steel SC
<b>P0305.030-BR</b>	M 3	1,55	5,5	Brass
<b>P0305.040-BR</b>	M 4	1,95	7	Brass
<b>P0305.050-BR</b>	M 5	2,45	8	Brass
<b>P0305.060-BR</b>	M 6	2,9	10	Brass
<b>P0305.080-BR</b>	M 8	3,7	13	Brass
<b>P0305.100-BR</b>	M10	4,7	17	Brass
<b>P0305.120-BR</b>	M12	5,7	19	Brass
<b>P0305.140-BR</b>	M14	6,42	22	Brass
<b>P0305.160-BR</b>	M16	7,42	24	Brass
<b>P0305.180-BR</b>	M18	8,42	27	Brass
<b>P0305.200-BR</b>	M20	9,1	30	Brass
<b>P0305.220-BR</b>	M22	9,9	34	Brass
<b>P0305.240-BR</b>	M24	10,9	36	Brass
<b>P0305.270-BR</b>	M27	12,4	41	Brass
<b>P0305.300-BR</b>	M30	13,9	46	Brass



## P0307



### Material

Stainless steel (A2 & A4, class 70), and steel class 4 (zinc-plated & self-colour).

### Technical Notes

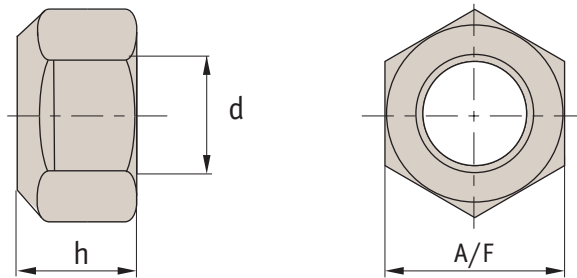
To DIN 439. Left hand threads.

Standard threads are coarse pitch.

Fine threads are indicated by an A & B suffix.

Order No.	d	h	A/F	Material
P0307.060-A2	M 6	2,9	10	A2 s/s
P0307.080-A2	M 8	3,7	13	A2 s/s
P0307.100-A2	M10	4,7	17	A2 s/s
P0307.100-100-A2	M10x1,0	4,7	17	A2 s/s
P0307.100-125-A2	M10x1,25	4,7	17	A2 s/s
P0307.120-A2	M12	5,7	19	A2 s/s
P0307.120-100-A2	M12x1,5	5,7	19	A2 s/s
P0307.120-125-A2	M12x1,25	5,7	19	A2 s/s
P0307.120-150-A2	M12x1,5	5,7	19	A2 s/s
P0307.140-A2	M14	7	22	A2 s/s
P0307.160-A2	M16	7,42	24	A2 s/s
P0307.160-150-A2	M16x1,5	7,42	24	A2 s/s
P0307.180-A2	M18	9	27	A2 s/s
P0307.180-150-A2	M18x1,5	9	27	A2 s/s
P0307.200-A2	M20	9,1	30	A2 s/s
P0307.200-150-A2	M20x1,5	9,1	30	A2 s/s
P0307.220-A2	M22	9,1	32	A2 s/s
P0307.220-150-A2	M22x1,5	9,1	32	A2 s/s
P0307.240-A2	M24	10,9	36	A2 s/s
P0307.240-150-A2	M24x1,5	10,9	36	A2 s/s
P0307.240-200-A2	M24x2,0	10,9	36	A2 s/s
P0307.270-A2	M27	13,5	41	A2 s/s
P0307.270-150-A2	M27x1,5	13,5	41	A2 s/s
P0307.300-A2	M30	13,9	46	A2 s/s
P0307.300-150-A2	M30x1,5	13,9	46	A2 s/s
P0307.360-A2	M36	16,9	55	A2 s/s
P0307.060-A4	M 6	2,9	10	A4 s/s
P0307.080-A4	M 8	3,7	13	A4 s/s
P0307.100-A4	M10	4,7	17	A4 s/s
P0307.120-A4	M12	5,7	19	A4 s/s
P0307.160-A4	M16	7,42	24	A4 s/s
P0307.200-A4	M20	9,1	30	A4 s/s
P0307.240-A4	M24	10,9	36	A4 s/s
P0307.300-A4	M30	13,9	46	A4 s/s
P0307.360-A4	M36	16,9	55	A4 s/s

Order No.	d	h	A/F	Material
P0307.050-ZP	M 5	2,7	8	Steel ZP
P0307.060-ZP	M 6	2,9	10	Steel ZP
P0307.080-ZP	M 8	3,7	13	Steel ZP
P0307.100-ZP	M10	4,7	17	Steel ZP
P0307.100-100-ZP	M10x1,0	4,7	17	Steel ZP
P0307.100-125-ZP	M10x1,25	4,7	17	Steel ZP
P0307.120-ZP	M12	5,7	19	Steel ZP
P0307.120-100-ZP	M12x1,5	5,7	19	Steel ZP
P0307.120-125-ZP	M12x1,25	5,7	19	Steel ZP
P0307.120-150-ZP	M12x1,5	5,7	19	Steel ZP
P0307.160-ZP	M16	7,42	24	Steel ZP
P0307.160-150-ZP	M16x1,5	7,42	24	Steel ZP
P0307.180-150-ZP	M18x1,5	9	27	Steel ZP
P0307.200-ZP	M20	9,1	30	Steel ZP
P0307.200-150-ZP	M20x1,5	9,1	30	Steel ZP
P0307.220-150-ZP	M22x1,5	9,1	32	Steel ZP
P0307.240-ZP	M24	10,9	36	Steel ZP
P0307.240-150-ZP	M24x1,5	10,9	36	Steel ZP
P0307.240-200-ZP	M24x2,0	10,9	36	Steel ZP
P0307.270-ZP	M27	13,5	41	Steel ZP
P0307.270-150-ZP	M27x1,5	13,5	41	Steel ZP
P0307.300-ZP	M30	13,9	46	Steel ZP
P0307.300-150-ZP	M30x1,5	13,9	46	Steel ZP
P0307.300-200-ZP	M30x2,0	13,9	46	Steel ZP
P0307.360-150-ZP	M36x1,5	18	55	Steel ZP
P0307.360-300-ZP	M36x3,0	18	55	Steel ZP
P0307.100-100-SC	M10x1,0	4,7	17	Steel SC
P0307.120-100-SC	M12x1,5	5,7	19	Steel SC
P0307.120-150-SC	M12x1,5	5,7	19	Steel SC
P0307.160-150-SC	M16x1,5	7,42	24	Steel SC
P0307.200-150-SC	M20x1,5	9,1	30	Steel SC
P0307.220-150-SC	M22x1,5	9,1	32	Steel SC
P0307.270-150-SC	M27x1,5	13,5	41	Steel SC
P0307.300-200-SC	M30x2,0	13,9	46	Steel SC
P0307.300-200-SC	M30x2,0	13,9	46	Steel SC



## P0308

### Material

Steel, zinc-plated (class 8), and stainless steel (A2 and A4).

### Technical Notes

To DIN 980 V.

Reusable, resistant to shocks, vibrations and dynamic loads.

The locking function is achieved by the deformation of part of the nut. The nut will run smoothly until it reaches the deformed part at which point the clamping force will increase.

Order No.	d	h	A/F	Material
<b>P0308.050-ZP</b>	M 5	5	8	Steel ZP
<b>P0308.060-ZP</b>	M 6	6	10	Steel ZP
<b>P0308.080-ZP</b>	M 8	8	13	Steel ZP
<b>P0308.100-ZP</b>	M10	10	17	Steel ZP
<b>P0308.120-ZP</b>	M12	12	19	Steel ZP
<b>P0308.140-ZP</b>	M14	14	22	Steel ZP
<b>P0308.160-ZP</b>	M16	16	24	Steel ZP
<b>P0308.200-ZP</b>	M20	20	30	Steel ZP
<b>P0308.240-ZP</b>	M24	24	36	Steel ZP
<b>P0308.300-ZP</b>	M30	30	46	Steel ZP
<b>P0308.030-A2</b>	M 3	3	5,5	A2 s/s
<b>P0308.040-A2</b>	M 4	4	10	A2 s/s
<b>P0308.050-A2</b>	M 5	5	8	A2 s/s
<b>P0308.060-A2</b>	M 6	6	10	A2 s/s
<b>P0308.080-A2</b>	M 8	8	13	A2 s/s
<b>P0308.100-A2</b>	M10	10	17	A2 s/s
<b>P0308.120-A2</b>	M12	12	19	A2 s/s

Order No.	d	h	A/F	Material
<b>P0308.160-A2</b>	M16	16	24	A2 s/s
<b>P0308.200-A2</b>	M20	20	30	A2 s/s
<b>P0308.220-A2</b>	M22	22	32	A2 s/s
<b>P0308.240-A2</b>	M24	24	36	A2 s/s
<b>P0308.030-A4</b>	M 3	3	5,5	A4 s/s
<b>P0308.040-A4</b>	M 4	4	10	A4 s/s
<b>P0308.050-A4</b>	M 5	5	8	A4 s/s
<b>P0308.060-A4</b>	M 6	6	10	A4 s/s
<b>P0308.080-A4</b>	M 8	8	13	A4 s/s
<b>P0308.100-A4</b>	M10	10	17	A4 s/s
<b>P0308.120-A4</b>	M12	12	19	A4 s/s
<b>P0308.160-A4</b>	M16	16	24	A4 s/s
<b>P0308.200-A4</b>	M20	20	30	A4 s/s
<b>P0308.220-A4</b>	M22	22	32	A4 s/s
<b>P0308.240-A4</b>	M24	24	36	A4 s/s