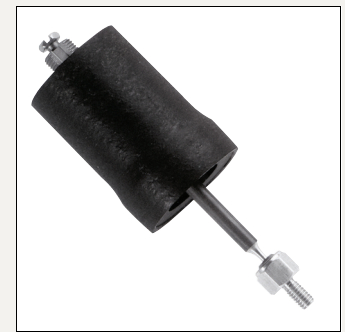
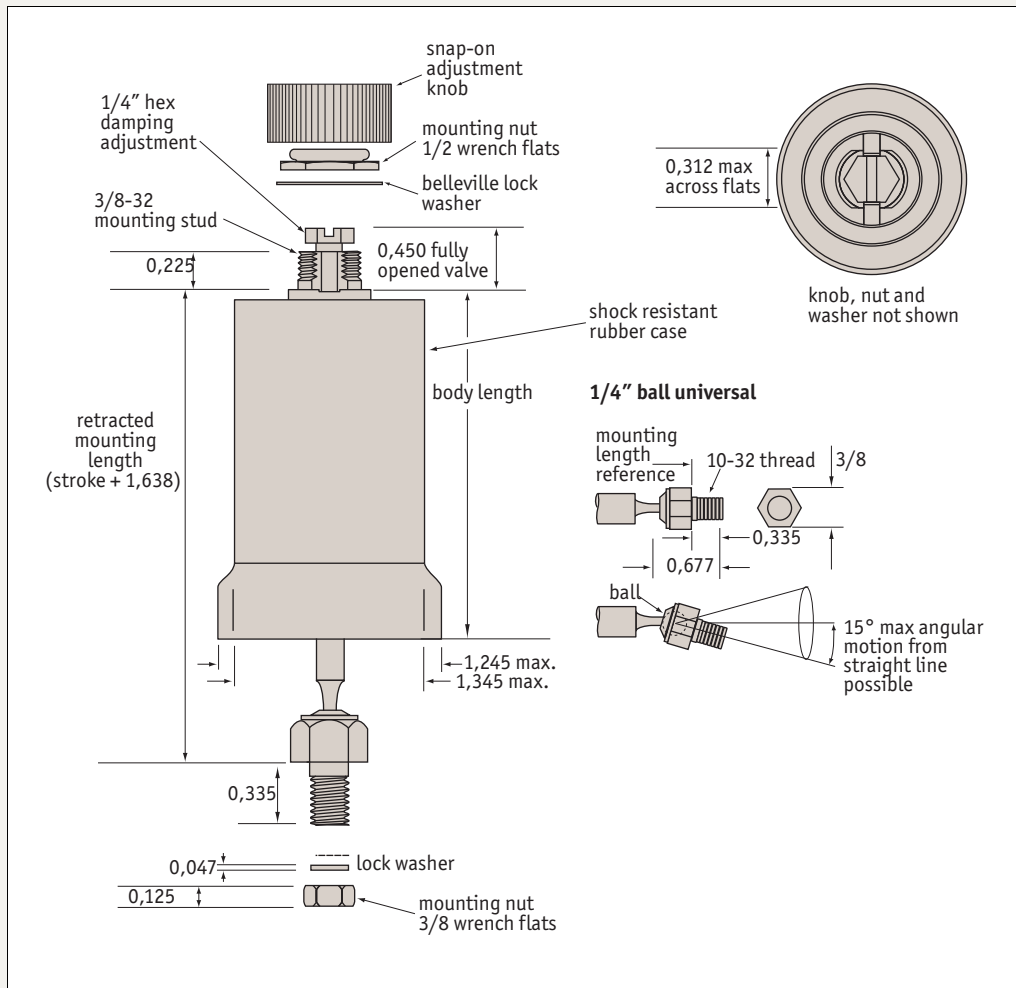


Push/Pull Dashpot

0.945" bore

Dashpots



L4576

Material

Graphite carbon piston.
Annealed borosilicate glass cylinder.
Precision fire-polished bore.
Aluminium 2024-T4 Piston rod.

Technical Notes

Damping coefficient = 0-5,25 N/(mm/s).
Friction coefficient = 0.2.
Force without side load: <1g.
Operating temperature range: -55°C to 150°C.
*If operating temperature is above

+70°C, please advise at time of ordering.

Important Notes

Mounting data:
Mounting hole:
Rectangular = 0.312 x 0.375 (8mm x 10mm)
Round = 0.375" (10mm)
Suggested mounting bracket thickness = 0.06 - 0.093 (1.52mm - 2.36mm)
Mounting nut torque:
Head = 4-8 in-lb (0.45 - 0.90 Nm)
Rod end = 5-15 in-lb (0.56-1.70 Nm)

Full stroke is obtained with customer held mounting tolerance of ±0.015" (0.38mm).

1/4" ball joint linkage option only available with aluminium rod.

Level of damping is adjustable by hand. If you know the level of damping required we can pre-set this in the factory.

Order no.	Stroke	Damping direction	Rod end linkage	Bore size	Max. pull damping force N	Max. push damping force N	Body length
L4576.0500-TW	0,5"	Two-way	1/4" Ball	0,945"	40	31,1	1,296"
L4576.1000-TW	1,0"	Two-way	1/4" Ball	0,945"	40	31,1	1,796"
L4576.1500-TW	1,5"	Two-way	1/4" Ball	0,945"	40	31,1	2,296"
L4576.2000-TW	2,0"	Two-way	1/4" Ball	0,945"	40	31,1	2,796"

Order no.	Stroke	Damping direction	Rod end linkage	Bore size	Max. pull damping force N	Max. push damping force N	Body length
L4576.0500-PL	0,5"	Pull	¼" Ball	0,945"	40	31,1	1,296"
L4576.1000-PL	1,0"	Pull	¼" Ball	0,945"	40	31,1	1,796"
L4576.1500-PL	1,5"	Pull	¼" Ball	0,945"	40	31,1	2,296"
L4576.2000-PL	2,0"	Pull	¼" Ball	0,945"	40	31,1	2,796"
L4576.0500-PS	0,5"	Push	¼" Ball	0,945"	40	31,1	1,277"
L4576.1000-PS	1,0"	Push	¼" Ball	0,945"	40	31,1	1,777"
L4576.1500-PS	1,5"	Push	¼" Ball	0,945"	40	31,1	2,277"
L4576.2000-PS	2,0"	Push	¼" Ball	0,945"	40	31,1	2,777"