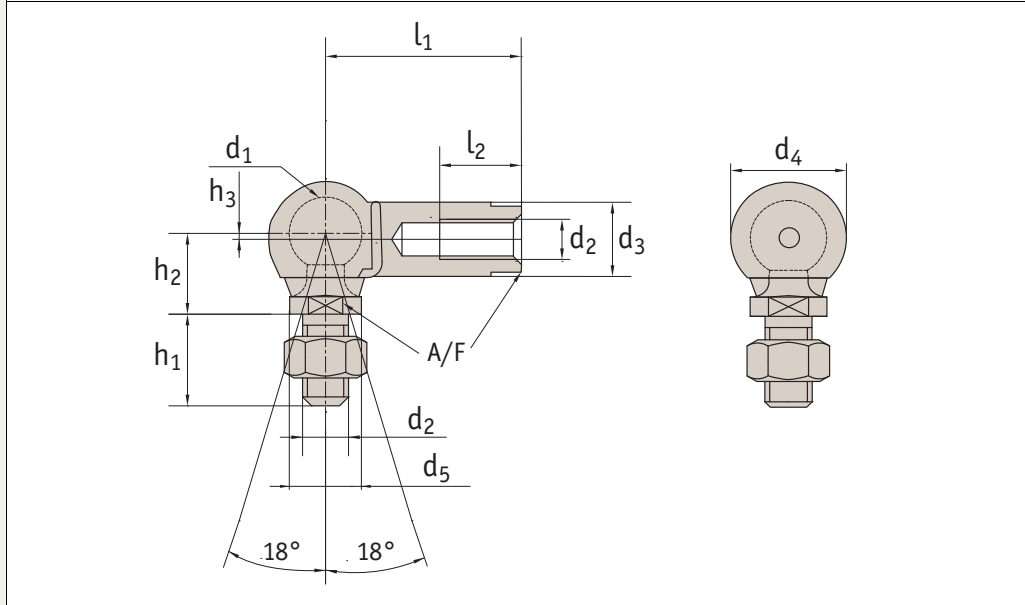




R3490



Material

Stud: carbon steel.
Housing: steel (9sMnPb28), silver zinc plated.
Sealing cap: neoprene.

Technical Notes

To DIN 71802 form CS. Supplied with hexagon nut.
Safety ring aids the retention of the ball stud in the housing.
*M14x1,5 is a fine pitch thread.

Tips

For yellow zinc plated see R3493.
Standard thread is right hand, (for left hand thread see R3491).

Order No.	Thread (hand)	d ₁	d ₂	l ₁ ±0.3	d ₃ ±0.5	d ₄ ±0.5	d ₅ ±0.5	h ₁ ±0.3	h ₂ ±0.3	l ₂ min.	Δ [±] _g
R3490.R005	Right	8	M 5	22	8	12,8	8	10,0	9	10,2	15,2
R3490.R006	Right	10	M 6	25	10	14,8	10	12,5	11	11,5	25,2
R3490.R008	Right	13	M 8	30	13	19,3	13	16,5	13	14,0	53,1
R3490.R010	Right	16	M10	35	16	24,0	16	20,0	16	15,5	103,8
R3490.R012	Right	16	M12	35	16	24,0	16	20,0	16	15,5	103,8
R3490.R014	Right	19	M14x1,5*	45	22	30,0	22	28,0	20	21,5	220,9
R3490.R015	Right	19	M14	45	22	30,0	22	28,0	20	21,5	220,9
R3490.R016	Right	19	M16	45	22	30,0	22	28,0	20	21,5	220,9

Order No.	h ₃	A/F h ₁₄	Min. extraction force Kg	Max. static load Kg	Max. dynamic load Kg	Max. force required for movement Kg
R3490.R005	0,65	7	3	50	20	3
R3490.R006	0,70	8	4	100	40	4
R3490.R008	1,15	11	6	200	80	6
R3490.R010	1,15	13	8	400	160	8
R3490.R012	1,15	13	8	400	160	8
R3490.R014	0,50	17	10	800	320	10
R3490.R015	0,50	17	10	800	320	10
R3490.R016	0,50	17	10	800	320	10